

Trichomonas Broth



Medium used for the selective isolation and cultivation of *Trichomonas* species.

• CONTENTS (Liter)

Pancreatic Digest of Casein	12.0 g
Beef Extract	2.0 g
Yeast Extract	5.0 g
L-Cysteine HCl	1.0 g
Maltose	2.0 g
Chloramphenicol	0.1 g
Final pH = 6.0 ± 0.2 at 25°C.	

• PROCEDURE

Suspend 22.1 G in 1 L of distilled or deionized water. Heat to boiling until completely dissolved. Sterilize by autoclaving at 121 °C for 15 minutes. Cool to 45-50°C in water bath. Aseptically add 1 vial of Horse Serum (MB-H1888). Mix well. Dispense in tubes.

Horse Serum

1 vial contents (each vial is sufficient for 1 L of medium)
Horse Serum 100 mL

• INTERPRETATION

Trichomonas Broth is a selective medium used for the isolation and cultivation of *Trichomonas* species. Pancreatic digest of casein, beef extract and yeast extract provide nitrogen, carbon, amino acids, and vitamins. Maltose is an energy source for the metabolism of microorganisms including *Trichomonas* spp. Chloramphenicol is a broad spectrum antibiotic which inhibits a wide range of gram-positive and gram-negative bacteria but not to *Trichomonas* spp.

• TECHNIC

Inoculate the specimen with stab using a sterile needle to the medium. Shake gently for spreading microorganisms. Incubate at 35 ± 2°C for 5 days. Refer appropriate references for recommended test procedure.

• QUALITY CONTROL FOR USE

Dehydrated medium

Appearance: free-flowing, homogeneous.

Color: light beige.

Prepared medium

Appearance: slightly opalescent.

Color: light amber.

Incubation conditions: 35 ± 2°C / 5 days

Microorganism	ATCC	Inoculum CFU	Growth
<i>Trichomonas vaginalis</i>	30001	50-100	good
<i>Candida albicans</i>	10231	50-100	good
<i>Escherichia coli</i>	25922	≥10 ³	partial to complete inhibition

• STORE

The powder is very hygroscopic. Store the powder at room temperature, in a dry environment, in its original container tightly closed and use it before the expiry date on the label or until signs of deterioration or contamination are evident. Store prepared medium at 2-8°C.

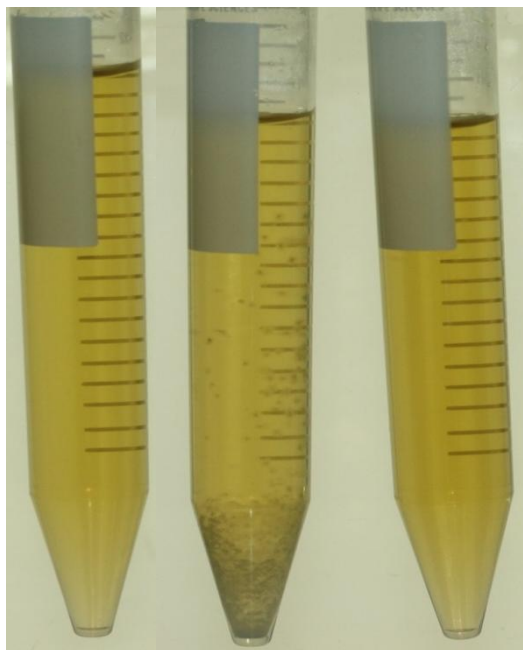
• REFERENCES

1. Rayner, C. F. A. (1968). Comparison of culture media for the growth of *Trichomonas vaginalis*. Br. J. Vener. Dis. 44: 63-66.
2. Murray, P. R. (1999). Manual of Clinical Microbiology, 7th ed. American Society of Microbiology, Washington, D.C.

• PACKAGE

Cat. No : MB-T1061 Trichomonas Broth	500 G
---	-------

• MICROBIAL CULTURE IMAGES



None

*Candida
albican*
ATCC 10231
(100CFU)

Escheriichia coli
ATCC 25922
(≥10⁸CFU)

Incubation conditions : 36°C, 3-5days